



Devon's Children's Services



Early Help and Disabled Children's Services

Lise Bird – Head of Service - Early Help and Partnerships

Jo Siney – Head of Service – Disabled Children's Service

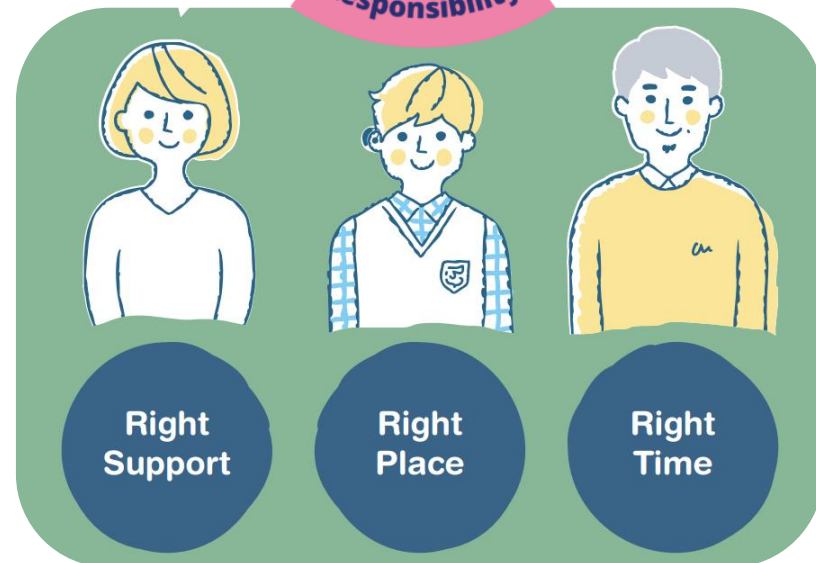
Jonathan Mitchell – Service Manager, Disabled Children's Service and DSCO



South West Institute for Teaching (SWIFT)
Primary SEND Professional Community" on
23rd May 2024

A quick refresh....

The Devon Support Windscreen





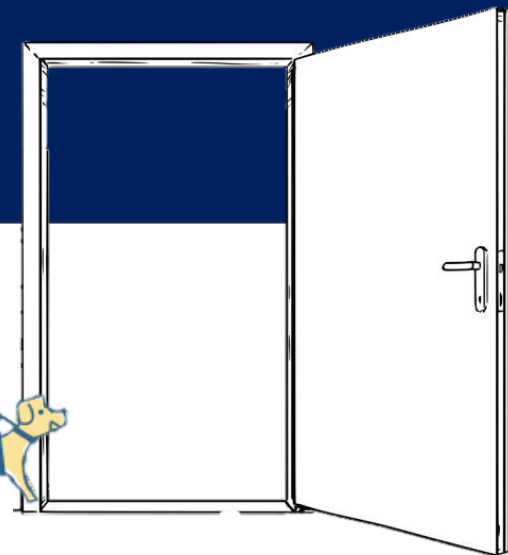
Social care support for disabled children and their families

Families with a disabled child may require additional support from a range of Children's Services.

Four levels of support available for disabled children and their families.

- Universal services that all families can access;
- Early help though partners coming together at a community level;
- Targeted help provided by the council - may include support from Disabled Children's Service;
- Specialist support from our social work teams.

Requests are made through Children's Services Front Door



Overview for disabled children



Assessment and planning through Early Help is an important part of supporting children and young people with Special Educational Needs and/or Disabilities.

How do we fit in?

Disabled Children's Service is an element of Children's Services rather than a separate service.

When a request for support is made, we consider the range of services and support provided by the government, early help and our partners as well as wider Children's Services, including our education partners and the graduated response to recommend the right **pathway for support**.

Disabled Children's Service has a number of elements which are different to other social care teams:

Disabled
Children's
Targeted Help

Early Help
Targeted
Support

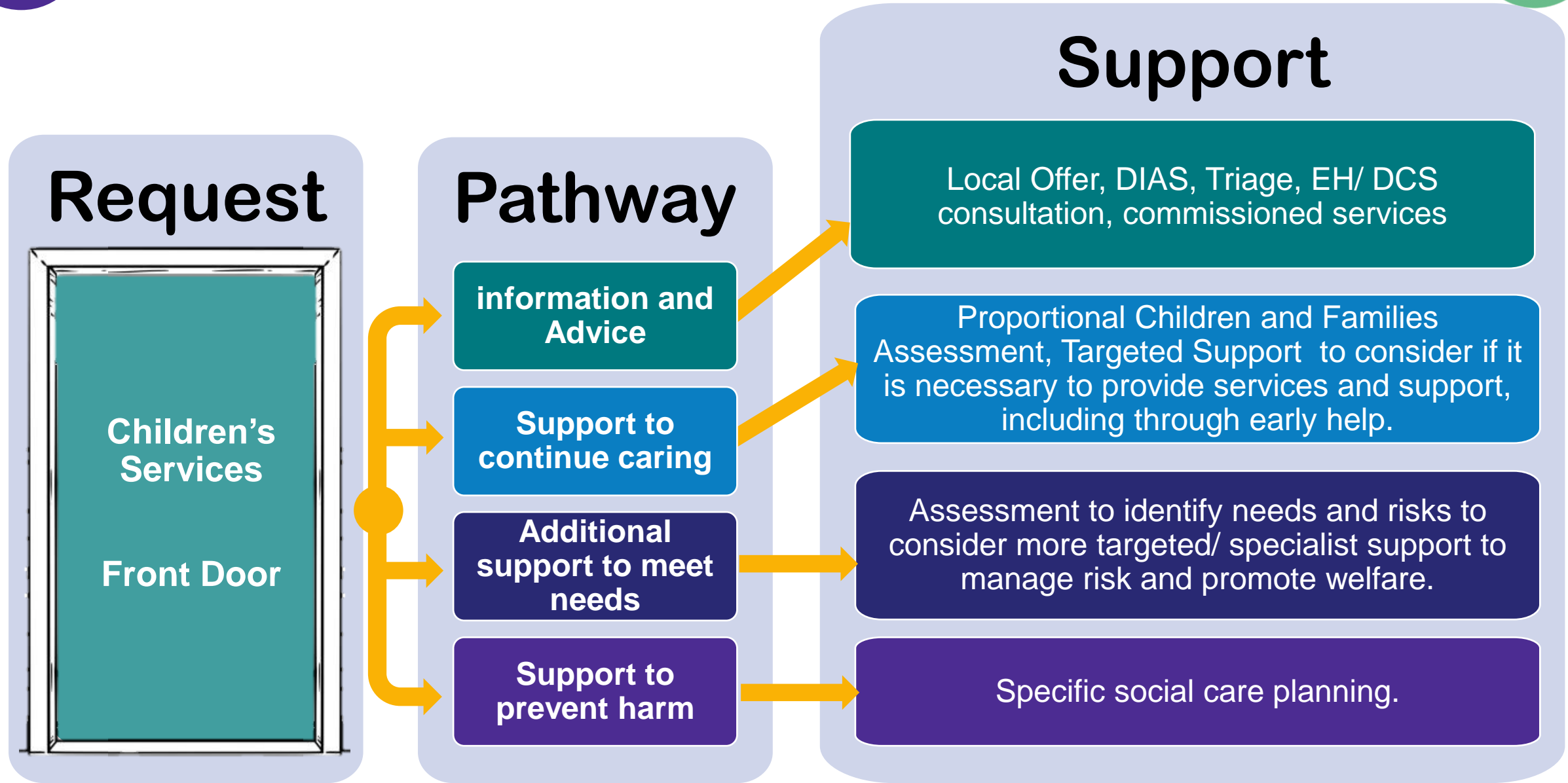
Disabled
Children's
Targeted
Support

Social Work

Safeguarding
and promoting
the welfare of
disabled
children and
their families



Pathways: right support/ right time



Support through our service



Our Disabled Children's Targeted Support is provided in addition to, or in partnership with, early help and include number of services which are accessible to you without the need to make a request for assessment.

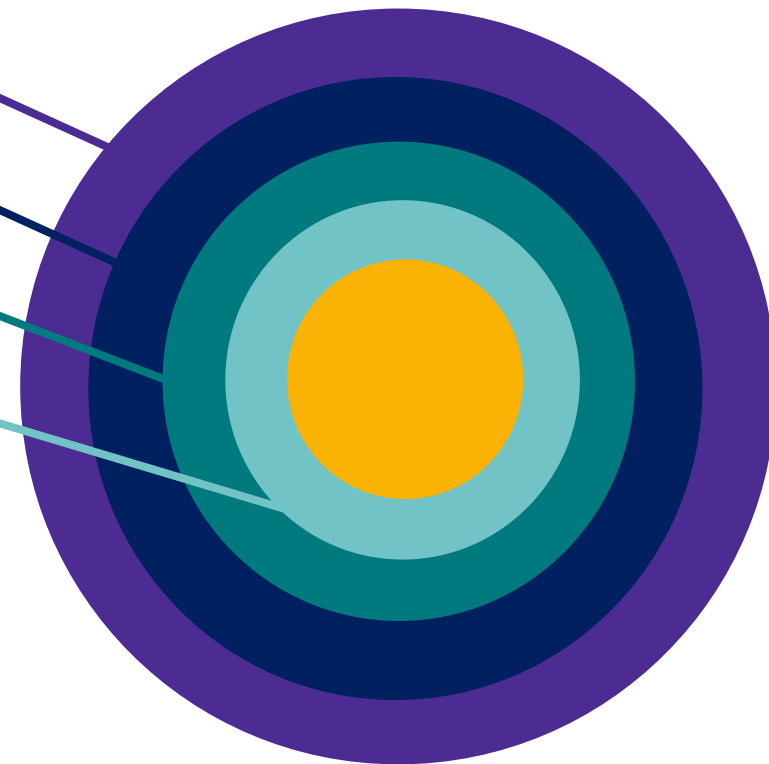
The type of support families could receive depends on their individual needs and may include:

Consultation and advice

Advice and practical help

Locality Early Help Triage

Disabled Children's Targeted Help



Disabled Children's Services Consultation and Helpline - 01392 385276

- Pre-referral and assessment consultation – Option 1
- Short Breaks Helpline – Option 2

Children and families should already have an established Early Help Assessment and Plan

Our DCS Targeted Support Teams

Disabled Children's Targeted Support is available for disabled children and their families that have been assessed as having eligible unmet **social care** needs which can only be met through additional services or support.

We will consider if the child or young person's daily life is **substantially affected** by one or more of the following areas of need and these needs cannot be met wider services:

- a hearing impairment;
- a visual impairment;
- a learning disability;
- a physical disability;
- a chronic or life-limiting physical illness;
- a significant communication disorder (including autism, which substantially and adversely affects their ability to take part in normal day to day activities).

Proportionate approaches

When/what is necessary to provide?

Families receive the right support, right service at the right time

Effective, supportive plans

Accessible support and provision

Short Breaks for Disabled Children

What is a short break?

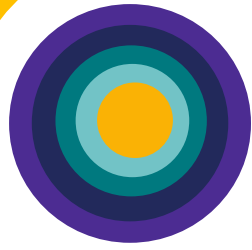
- A short break gives disabled children or young people opportunities to have fun doing things they enjoy, make friends and spend quality time with other young people in new environments and develop skills.
- It also provides parents and carers with a regularly planned break from their caring responsibilities.
- A short break may be for a few hours during the day, evening or overnight.
- A short break may be provided by community groups and activities or a local specialist provider, individual enabler support, overnight breaks with foster carers or residential children's homes.



Practitioners can ask for a pre-request conversation through our DCS Consultation line.

During this conversation we will look together at child's needs and what support is accessible to consider if there are additional unmet social care needs.

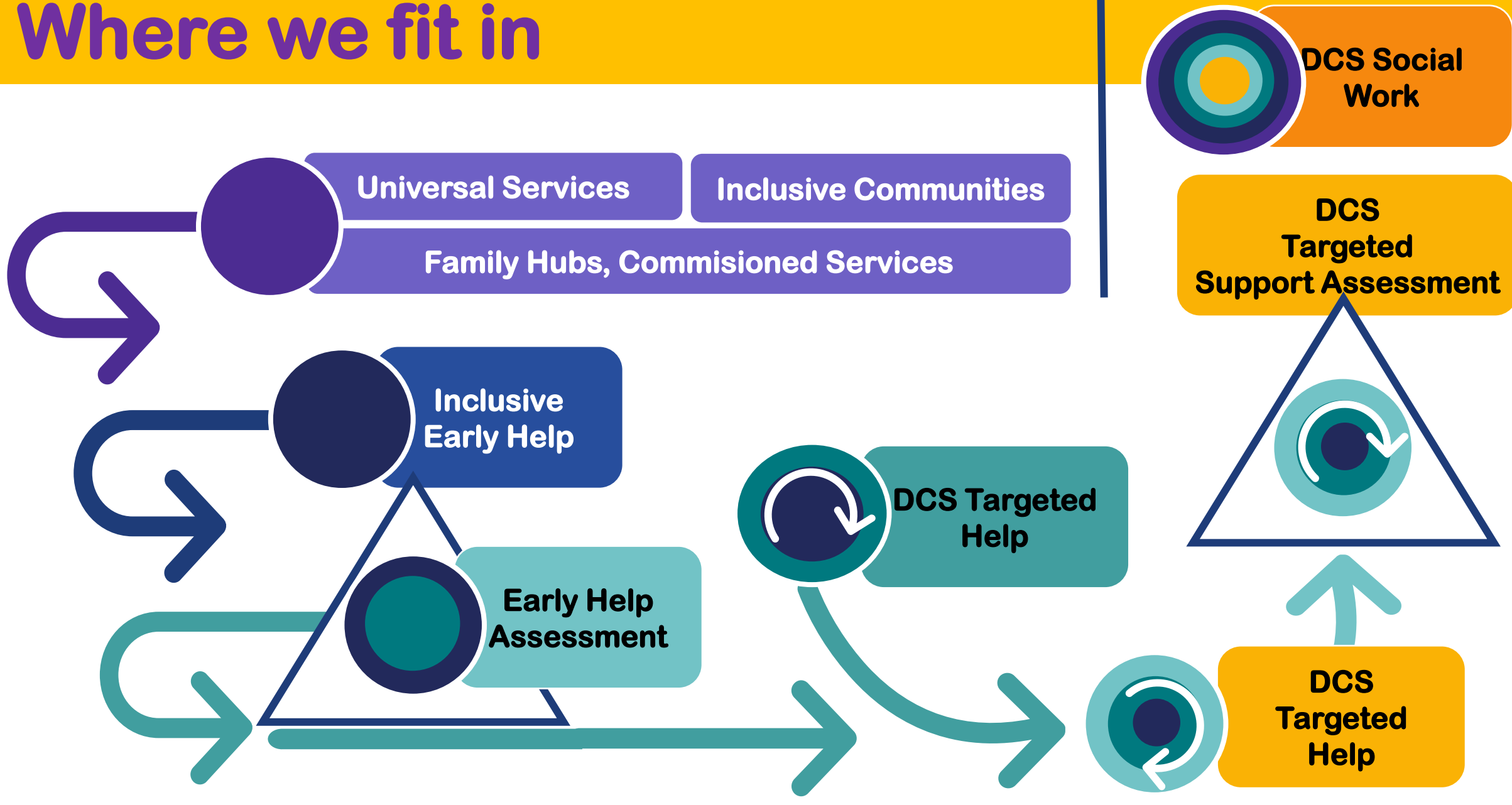
Our DCS Social Work Service



- Requests for involvement are made through Front Door.
- Four social work teams (North, South, Mid & East, Exeter)
- Undertake assessment of need and planning with children and families where there are complex needs, or risk of harm.
- Children, young people and families supported at this level, after assessment, will have an allocated social worker who will coordinate a multi-agency plan.
- Social work support will be required where a child or young person has experienced serious forms of abuse and/or neglect or is likely to experience serious forms of abuse or neglect or both without support, which means they need protecting.
- Support children with child protection plans and children in care as well.



Where we fit in



Direct intervention in partnership with Early Help and wider Children's Services